

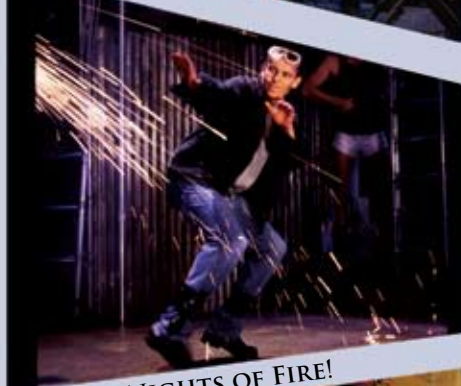
ED ASNER as FDR



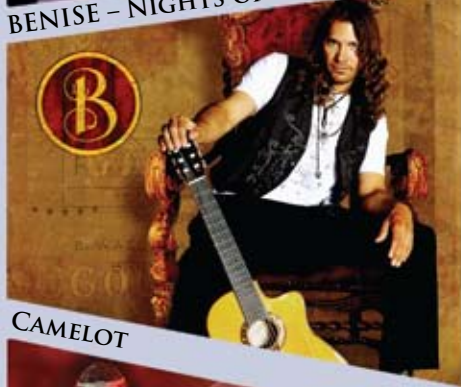
THE WEDDING SINGER



TAP DOGS



BENISE - NIGHTS OF FIRE!



CAMELOT



MATTIE KELLY ARTS CENTER

NORTHWEST FLORIDA STATE COLLEGE

Broadway's Best

2009-2010
SEASON



LE GRAND CIRQUE

The Mattie Kelly Fine & Performing Arts Center at Northwest Florida State College proudly presents our 13th season of "Broadway's Best" shows!

There is something for everyone at the Mattie Kelly Arts Center – from award-winning Broadway musicals, to international guest artists, exciting family fare, art exhibitions, exhilarating concerts and more. Best of all, our wonderful array of national touring shows is offered at the same affordable ticket rate as the past 3 years – marvelous entertainment at a great price!

As the Emerald Coast's premier venue for live theatre and concerts, the Mattie Kelly Arts Center truly presents the very best Broadway has to offer. Located on the main campus of NWFSO in Niceville, the center has enhanced the cultural landscape of Northwest Florida since opening in 1998 and has served more than one million patrons! Join us this season for the finest in access to the arts and entertainment. Contact the Box Office or see the Mattie Kelly Fine & Performing Arts Center website at www.mattiekellyartscenter.org for updates and more information on our fabulous 2009-10 season!



MATTIE KELLY ARTS CENTER

NORTHWEST FLORIDA STATE COLLEGE



SEASON TICKETS AVAILABLE AUG. 24 TO OCT. 23

Individual Tickets for All Shows Available:

August 28 - Online • August 31 - Phone, In-person, & Online

CALL, CLICK, OR VISIT THE BOX OFFICE FOR YOUR TICKETS!

Mattie Kelly Arts Center Box Office

(850) 729-6000 or toll free at 1-888-838-ARTS (2787)

Online 24/7 at www.mattiekellyartscenter.org

In-person Monday to Friday 9:00 a.m. to 4:00 p.m.

and 90 minutes prior to show time. Closed during college holidays.



MATTIE KELLY ARTS CENTER INFORMATION

Address & Directions

The Mattie Kelly Arts Center is located at 100 College Boulevard on the Niceville campus of Northwest Florida State College. The center is easily accessible via U.S. Highway 285 (Partin Drive), U.S. Highway 85, the Mid-Bay Bridge, and Interstate 10. For directions visit www.mattiekellyartscenter.org or call (850) 729-6000.

Group Sales and Discounts

Groups of 10 or more will receive a \$5 per ticket discount if the group sale is made by a single purchaser.

Refunds and Exchanges

The Mattie Kelly Arts Center cannot supply refunds unless an event is cancelled or rescheduled. There are no exchanges.

Special Needs Patrons

We are happy to provide services for those with special needs. Wheelchair and companion seating is available upon request. The facility is also equipped with wheelchair accessible restrooms, handicap parking, ramps, and a passenger loading and unloading area to assist those with disabilities. Assisted listening devices are available in the lobby prior to performances. Requests for an interpreter for signed performances must be made at least five days in advance. Please notify the Associate Director of the Mattie Kelly Arts Center at (850) 729-6004 of your special needs. Assisted listening devices have been generously provided by the Sugar Beach Sertoma Club.



BENISE – NIGHTS OF FIRE!

October 23, 2009
Artist Series / \$30

Spanish guitarist Roni Benise unveils his Emmy award-winning, electrifying, multi-cultural stage show *Nights Of Fire!* Backed by a stage full of musicians and elaborately choreographed dancers, *Nights Of Fire!* captures world music at its best, with a show that appeals to the hearts and souls of people of all ages, cultures and musical backgrounds.



TAP DOGS



November 9, 2009
Broadway Series / \$45

The international sensation - *Tap Dogs* - is back and ready to leave dents on stages all across North America. Winner of 11 international awards, *Tap Dogs* premiered at the Sydney Theatre Festival, moved on to London and New York, and has been a howling success all across North America, Europe, Asia, and Australia. Created by Olivier award-winning choreographer Dein Perry, with a construction site set by designer/director Nigel Triffitt, and a driving score by composer Andrew Wilkie, *Tap Dogs* is a rough, tough, rocking theatrical entertainment.

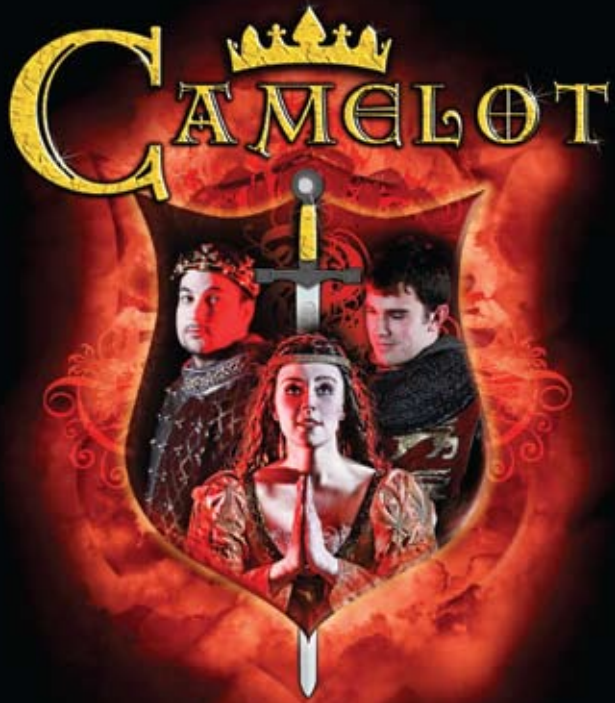
CAMELOT

December 1, 2009

Broadway Series / \$45

Rediscover the grandeur of one of history's greatest love stories in Lerner and Loewe's timeless masterpiece, *Camelot*. A sumptuous tale set in a land where honor and chivalry reign, *Camelot* follows the love triangle of King Arthur, his Queen Guenevere and the young Lancelot. With one of Broadway's most enchanting scores featuring the hauntingly romantic "If Ever I Would Leave You," "I Loved You Once in Silence," and "Follow Me", *Camelot* is the definitive musical theatre fable.

LENER AND LOEWE'S



THE WEDDING SINGER

January 22, 2010

Broadway Series / \$45

Travel back to the 1980's when pastel was in, hair was big and the wedding singer was the coolest guy in the room! Based on the 1998 hit film starring Adam Sandler and Drew Barrymore, *The Wedding Singer* tells the story of Robbie Hart, New Jersey's favorite wedding singer. When Robbie is left at the altar at his own wedding, he becomes broken-hearted and a wedding planner's worst nightmare. Every wedding he plays is a disaster until a charming waitress named Julia wins his affections. The only trouble is, she is about to be married and unless Robbie can pull off the performance of his lifetime, the girl of his dreams will be gone forever.



ED ASNER AS FDR

February 6, 2010

Artist Series / \$30

Ed Asner, recipient of seven Emmy Awards ("Mary Tyler Moore Show", "Lou Grant") and 16 nominations, five Golden Globe Awards, and member of the TV Academy Hall of Fame, stars in the solo performance drama, *FDR*, based upon Dore Schary's Broadway hit "Sunrise at Campobello". *FDR* explores the life of one of America's best-loved presidents, Franklin Delano Roosevelt, and the events and decisions that shaped a nation. This powerful play follows the iconic president as he reflects on his years in office, from inauguration to the trials of World War II.

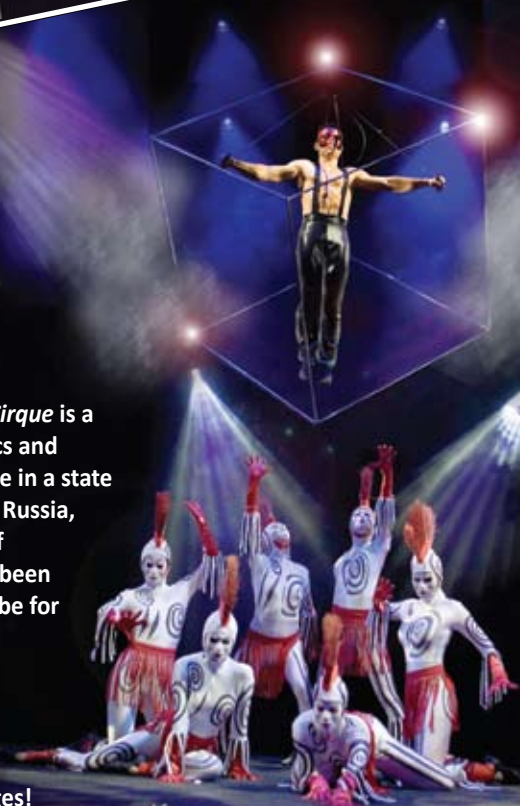


LE GRAND CIRQUE

February 17, 2010

Broadway Series / \$45

Seen by millions of people around the world, *Le Grand Cirque* is a jaw-dropping, visual feast of spectacular group acrobatics and white-knuckle stunts that consistently leave the audience in a state of awe! Firmly rooted in the timeless circus traditions of Russia, China, and Eastern Europe, the international company of champion acrobats and performers has been hand-picked from around the globe for their death-defying abilities and precision skill. Blended with elements of modern and traditional acts of wonder, *Le Grand Cirque* is sure to astound audiences of all ages!



2009-2010 SEASON ORDER FORM

Broadway & Artist Combo Package (6 shows) _____ x \$200

Benise – Nights of Fire!, Tap Dogs, Camelot, The Wedding Singer, Ed Asner as FDR, Le Grand Cirque

Broadway Series Package (4 shows) _____ x \$165

Tap Dogs, Camelot, The Wedding Singer, Le Grand Cirque

SEE WEBSITE FOR SYMPHONY PACKAGES AND OTHER EVENT TICKET INFORMATION



Individual Tickets

Benise – Nights of Fire! _____ x \$30

Tap Dogs _____ x \$45

Camelot _____ x \$45

The Wedding Singer _____ x \$45

Ed Asner as FDR _____ x \$30

Le Grand Cirque _____ x \$45

Total of purchase: \$ _____

WWW.MATTIEKELLYARTSCENTER.ORG

(850) 729-6000

TOLL FREE 1-888-838-ARTS (2787)

Name: _____

Address: _____

City: _____ State: _____ Zip Code: _____

Email: _____

*Include your email to receive Mattie Kelly Arts Center or NFSO updates, news, etc.
We do not share email addresses with other organizations.*

Seating preference: Main Floor Balcony Specific Seat # _____

Payment method: Check to "Mattie Kelly Arts Center"
Mail to: 100 College Boulevard, Niceville, Florida 32578

MasterCard VISA Amex Discover

Credit Card # _____ Exp. Date: ____/____/____

Signature: _____

MATTIE KELLY
ARTS CENTER
NORTHWEST FLORIDA STATE COLLEGE

2009-2010 SEASON

Schedule subject to change.
For the most up-to-date listing, visit
www.mattiekellyartscenter.org

SEPTEMBER 2009

- SEPT 13–
OCT 18 *Vitriforms: Contemporary
Glass Art with Selections from
the Permanent Collection*
- SEPT 17 *The Spider and the Bee –
School Show*
- SEPT 26 *From Russia with Love –
NFSO Symphony Concert*

OCTOBER 2009

- OCT 8–10 *Clarence Darrow –
NWFSC Fall Production*
- OCT 15–17 *The Diary of Adam & Eve –
NWFSC Fall Production*
- OCT 23 *Benise – Nights of Fire!*
- OCT 30 *A Halloween Spooktacular –
NFSO Symphony Concert*

NOVEMBER 2009

- NOV 1–
DEC 6 *Art Exhibition –
Dylan Collins: Bioaesthetic
with Wendy Wischer:
Angels & Ancestors*
- NOV 9 *Tap Dogs*

DECEMBER 2009

- DEC 1 *Camelot*
- DEC 4 *NWFSC Madrigals &
Belle Voci Holiday Delights*
- DEC 5 *Junior Orchestra
Holiday Concert*
- DEC 11 *Holiday Pops –
NFSO Symphony Concert*
- DEC 13 *NW FL Symphony
Youth Orchestra
Holiday Concert*

>> *Over for more events*

JANUARY 2010

- JAN 12 *Tales of a 4th Grade
Nothing – School Show*
- JAN 17–
FEB 21 Florida Visual Arts
Fellowship Exhibition
- JAN 22 *The Wedding Singer*

FEBRUARY 2010

- FEB 6 *Ed Asner as FDR*
- FEB 14 Show Choir Snowbird Show
- FEB 17 *Le Grand Cirque*
- FEB 19 *Stars of Tomorrow –
NFSO Symphony Concert*

MARCH 2010

- MAR 7–
APR 18 NWFSC Arnie Hart Juried
Student Exhibition with
NWFSC Arts Center Faculty
and Staff Exhibition
- MAR 9 *Frog and Toad – School Show*
- MAR 10–13 *Come Blow Your Horn –
NWFSC Spring Production*

APRIL 2010

- APR 10 *European Masters –
NFSO Symphony Concert*
- APR 13 *Click, Clack, Moo –
School Show*
- APR 23–24 Dance Facets 2010
- APR 27 NWFSC Jazz
Ensemble Concert
- APR 29 Show Choir Season Finale

MAY 2010

- MAY 2–
JUNE 3 Art and Design Society 18th
Annual Southeast Regional
Juried Fine Arts Exhibition
with 2009 ADSO Best in
Show Winner, Ed Chandler
- MAY 16 Youth Symphony &
Junior Orchestra Concert

JUNE 2010

- JUNE 20–
JULY 25 Time and Object:
an Exhibition Honoring
Eglin AFB's 75th Anniversary
with Owen Mundy Exhibition

JULY 2010

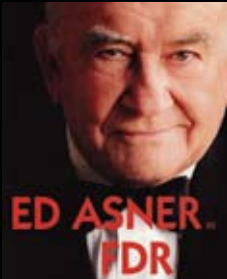
- JULY 14–17 *Grease –
NWFSC Summer Musical*

MATTIE KELLY ARTS CENTER

NORTHWEST FLORIDA STATE COLLEGE

100 College Boulevard
Niceville, Florida 32578

An Equal Access/Equal Opportunity Institution



LE GRAND CIRQUE

Broadway's Best
2009-2010 Season

www.mattiekellyartscenter.org

FIRST CLASS PRSRT
US POSTAGE PAID
CASS DATA & MAILING